

Ritterschlag

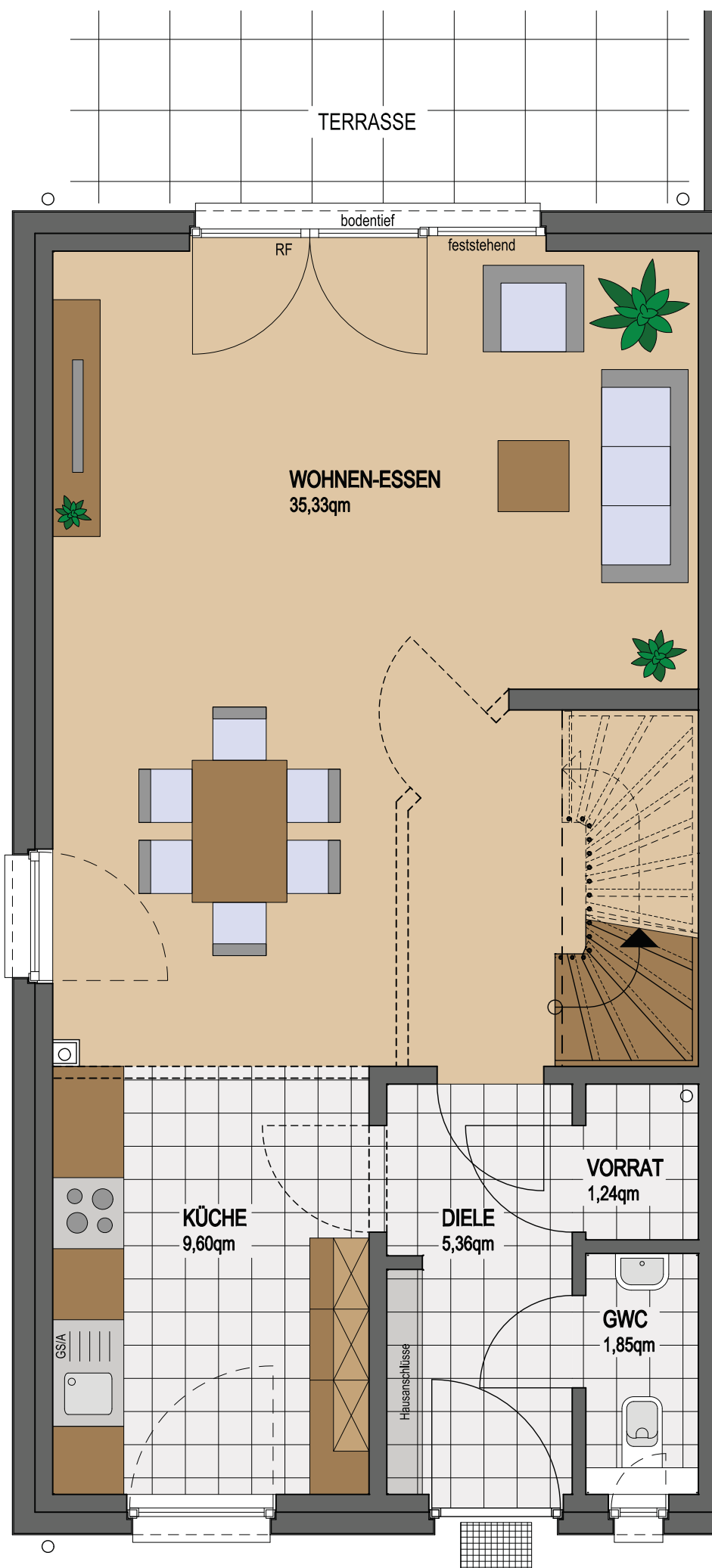
Doppio Tetto | Doppelhaushälfte

Grundrisse



unverb. Abb.

Berlin-Schulzendorf I.1
Zeile 12 Haus 8
Zeile 13 Haus 3

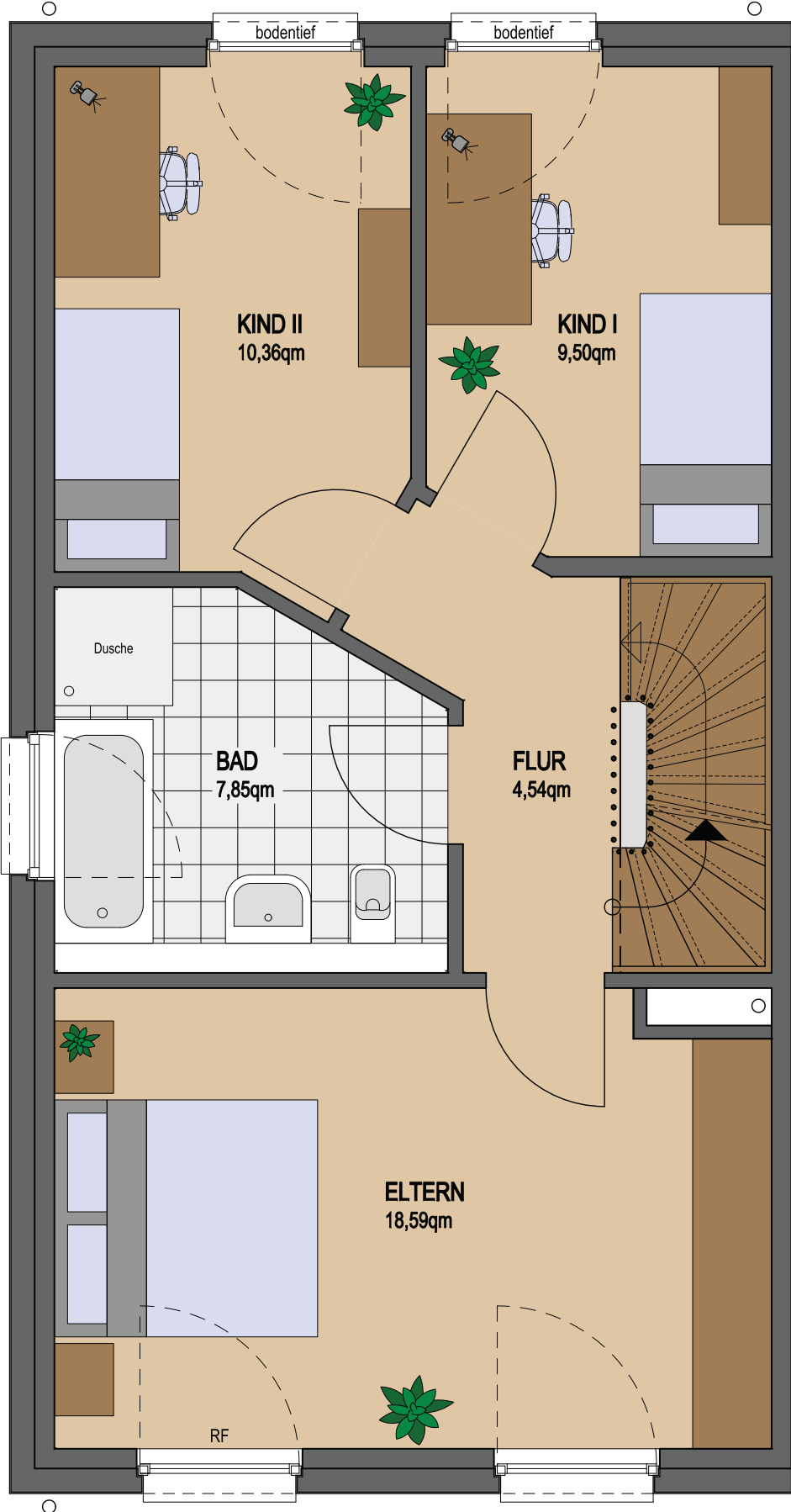


Doppio Tetto

MASTERHAUS LINKS

ERDGESCHOSS

Variante B

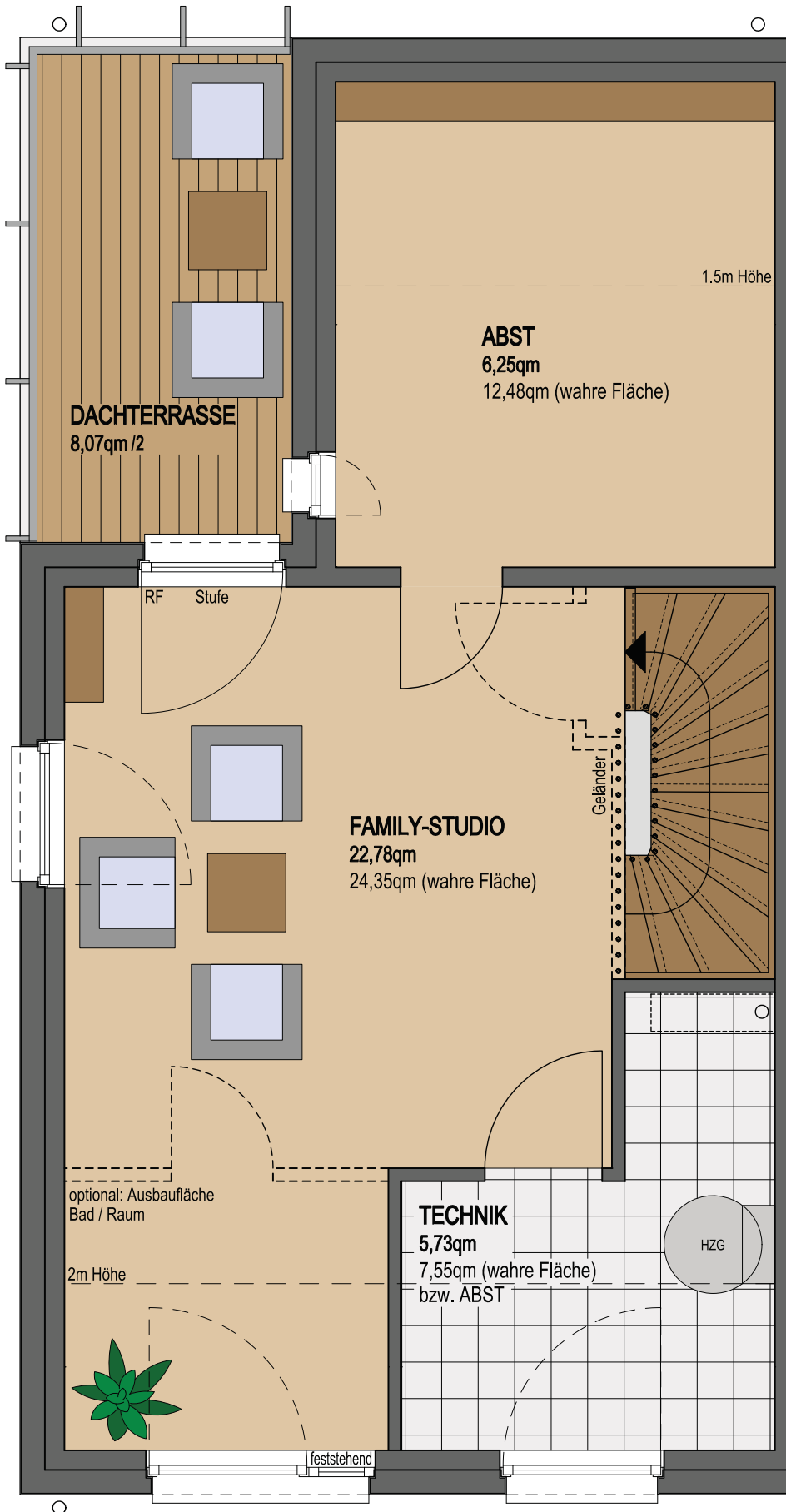


Doppio Tetto

MASTERHAUS LINKS

OBERGESCHOSS

Variante 1



Doppio Tetto

MASTERHAUS LINKS

DACHGESCHOSS